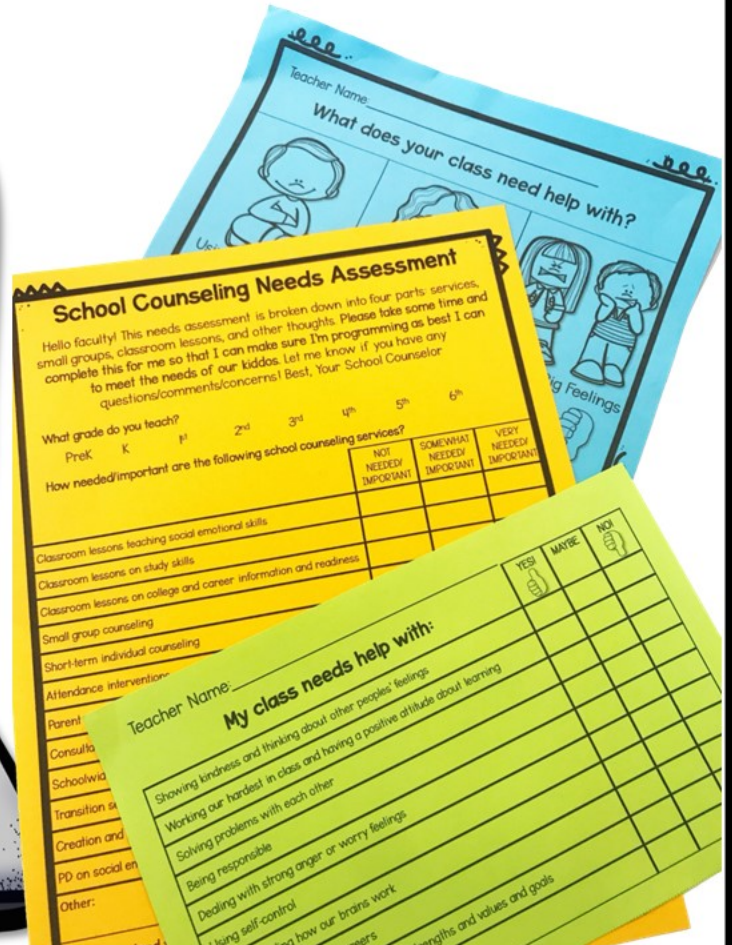
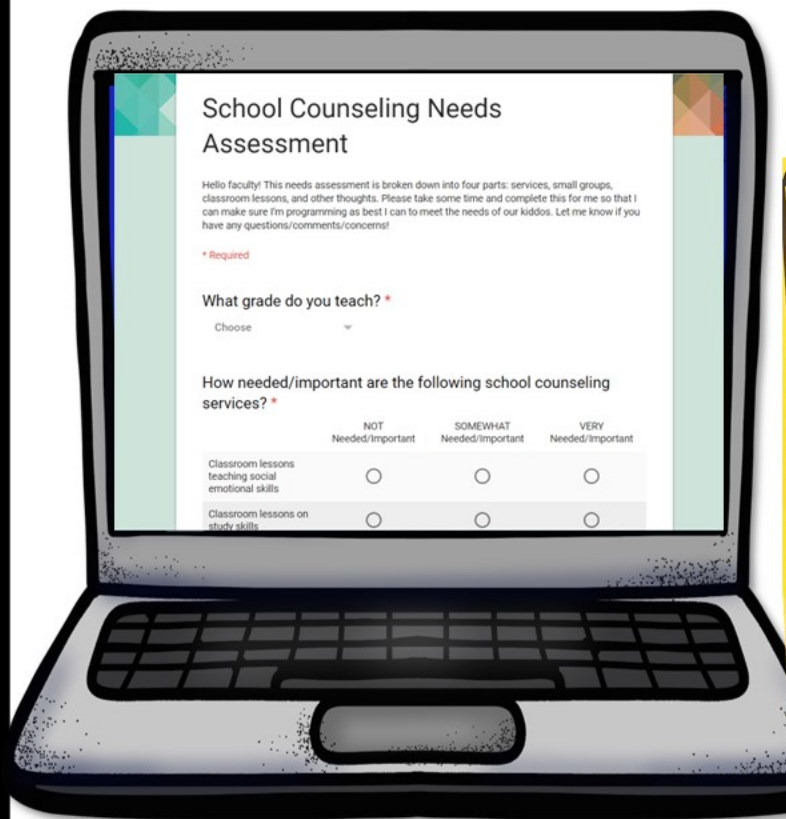


SCHOOL COUNSELING NEEDS ASSESSMENTS



EDITABLE Printable and Digital Forms
for Faculty, Parents, and Students

Student Needs Assessment - DIRECTIONS

- Four versions included: upper elementary and lower elementary, each digital and hard copy
- **Upper elementary (3rd-6th):**
 - Students give their opinion on whether or not their class needs help with 10 different topics.
 - They can respond YES, MAYBE, or NO for each.
 - Designed to be completed independently during a whole group lesson or mini-lesson.
 - For electronic version, be sure to add teacher names into dropdown options! If you add a box for students to type in additional ideas/thoughts, I recommend also adding a prompt for their name.
 - **LINK TO EDITABLE FORM:**
- **Lower elementary (K-2nd):**
 - Similar to above, but focused on 6 different topics with visuals and only two response options (yes or no). (Note: Due to clip artist's terms of use, graphics are not editable or moveable. However, the text is.)
 - Google form version also includes visuals. Since scrolling is a developing skill, the google form version is presented one question at a time to keep everyone at the same place as you read aloud.
 - **LINK TO EDITABLE FORM:**

Name: _____ Teacher Name: _____

I wish my class could have lessons about:

	YES!	MAYBE	NO!
Showing kindness and thinking about other peoples' feelings			
Working our hardest in class and having a positive attitude about learning			
Solving problems/arguments with each other			
Being responsible			
Dealing with strong anger or worry feelings, handling stress			
Using self-control			
Knowing more about careers			
Feeling good about ourselves and knowing our strengths and goals			
Being leaders and role models			

Do you have friends at school? YES NO

Is there anything else you want your school counselor to know?

Teacher Name: _____

What does your class need help with?



Using Self-Control



YES



NO



Being Good Workers



YES



NO



Handling Big Feelings



YES



NO



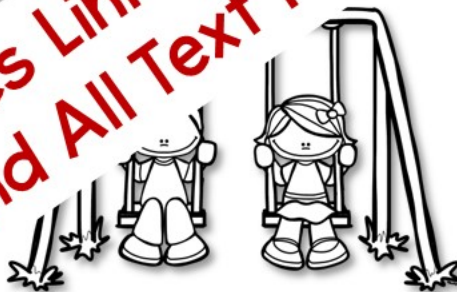
Solving Problems
With Each Other



YES



NO



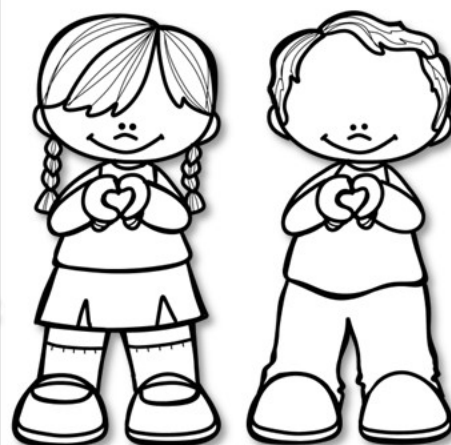
Sharing and
Taking Turns



YES



NO



Being Kind



YES



NO

Also Includes Link to Google Form Version,
and All Text Fully Editable

Faculty Needs Assessments

- **Digital vs. hard copy:** You know your faculty best and what works for them AND what works best for you. You can also give them all both options.
- To use the hard copy form, simply edit whatever text you want to edit in the following pages. I've included notes of edits/personalizations that I use for my own school.
- To use the google form, click the link below. You will immediately be prompted to "make a copy". Click this button and you will officially have your own digital needs assessment to work with! All questions and responses are fully editable.
 - **Beginning of the Year:** [LINK](#)
 - **Mid-Year:** [LINK](#)
 - **End of the Year:** [LINK](#)
 - When you are done editing it how you want, click the button in the upper right hand corner labeled "SEND" to either add email addresses of recipients or generate a shareable survey link.
- *I recommend administering the BOY needs assessment around six week into the school year, the mid-year in December (if you start in August) or January (if you start in September), and the end of year assessment two-three weeks before school ends.*

School Counseling Needs Assessment

Hello faculty! This needs assessment is broken down into four parts: services, small groups, classroom lessons, and other thoughts. Please take some time and complete this for me so that I can make sure I'm programming as best I can to meet the needs of our kiddos. Let me know if you have any questions/comments/concerns! Best, Your School Counselor

What grade do you teach?

PreK

K

1st

2nd

3rd

4th

5th

How needed/important are the following school counseling services?

Classroom lessons teaching social emotional skills

Classroom lessons on study skills

Classroom lessons on college and career readiness

Other services that benefit from the following

A question I have

The following questions are not to help the counseling department

How can our counseling department

Something from last year that the school counseling department did that I really liked was...

School Counseling Needs Assessment

Hello parents! This is a brief survey about our school's school counseling program. I want your voice and input to make sure I am providing the best services I can to your children. Please take some time and complete this for me so that I can make sure I'm programming as best I can to meet the needs of our kiddos. Let me know if you have any questions/comments/concerns!

Best, Your School Counselor

What grade is your child in? (circle all that apply)

PreK

K

1st

2nd

3rd

4th

5th

6th

How needed/important are the following school counseling services?

	NOT NEEDED/ IMPORTANT	SOMEWHAT NEEDED/ IMPORTANT	VERY NEEDED/ IMPORTANT
Classroom lessons teaching social emotional skills			
Classroom lessons on study skills			

School Counseling Mid-Year Program Evaluation and Needs Assessment

Hello faculty! This document provides me with a formative of my programming so far this year and to capture additional data about what to focus on in my core curriculum spring semester. Please take two minutes to fill it out!

Best, Your School Counselor

What grade do you teach?

PreK

K

1st

2nd

3rd

4th

5th

6th

Non-Classroom

STRONGLY DISAGREE	DISAGREE	AGREE	STRONGLY AGREE

I understand the role of the school counselor at View.

The school counselor helps students develop and emotionally.

I feel comfortable consulting and collaborating with the school counselor.

The school counselor provides important lessons to the students at our school.

My students are benefitting from lessons.

To what degree are the

Individual short-term

Small group counseling

Classroom counseling

Coordinating

Consulting with teachers

Program

The biggest issues I think this cohort will still need help with next year

- ☐ Responsibility (understanding what's in vs. out of your control, consequences, problem solving, etc.)
- ☐ Being a Learner (what are good learning habits, what is best effort, focused/on task, goal setting, etc.)
- ☐ Identifying, expressing, and coping with strong emotions
- ☐ Career exploration (career clusters, what education levels are required)
- ☐ Kindness/Empathy/Perspective Taking
- ☐ Growth Mindset
- ☐ Mindfulness (mindful breathing, gratitude, being present, etc.)
- ☐ Positive Communication (I-messages, apologies, tone of voice, body language before speaking, etc.)
- ☐ Personal Identity (personal values, character and reputation, peer pressure)
- ☐ Friendship Skills (what is a good friend, conversation skills, apologies, sportsmanship, etc.)
- ☐ Other: _____

Were there any lessons I did this year with your class that you think I definitely need to do again next year?

What are the strengths of our school counseling program?

What are the areas of growth in our school counseling program?

Any other questions/

School Counseling Needs Assessment

Hello faculty! This needs assessment is broken down into four parts: services, small groups, classroom lessons, and other thoughts. Please take some time and complete this for me so that I can make sure I'm programming as best I can to meet the needs of our kiddos. Let me know if you have any questions/comments/concerns!

* Required

What grade do you teach? *

Choose

How needed/important are the following school counseling services? *

	NOT Needed/Important	SOMEWHAT Needed/Important	VERY Needed/Important
Classroom lessons teaching social emotional skills	<input type="radio"/>	<input type="radio"/>	<input type="radio"/>
Classroom lessons on study skills	<input type="radio"/>	<input type="radio"/>	<input type="radio"/>

Does your class need help being good workers?

*



☐ YES!



☐ NO!

Caregiver Beginning of the Year Needs Assessment

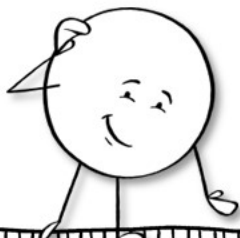
- To use the google form, click the link below. You will immediately be prompted to “make a copy”. Click this button and you will officially have your own digital needs assessment to work with! All questions and responses are fully editable.
 - LINK TO EDITABLE FORM: Use the google form link for sending the survey out via email or for posting on school’s social media.
- If sending home URL on hard copy paper asking for responses, consider using www.bit.ly or www.tinyurl.com to create a shorter link.
- Also included is an editable half sheet you can send home encouraging participation. This is an easy thing to hand out during the car rider line, for parents eating lunch with their students, etc.

We need YOUR opinion!

INSERT YOUR TINY URL OR
BIT.LY HERE

Type the above URL into your web
browser (phone, tablet, laptop, or
desktop) to complete a brief survey
about _____ Elementary's
school counseling program.

We're all ears, please share your
thoughts with us!



We need YOUR opinion!

INSERT YOUR TINY URL OR
BIT.LY HERE

Type the above URL into your web
browser (phone, tablet, laptop, or
desktop) to complete a brief survey
about _____ Elementary's
school counseling program.

We're all ears, please share your
thoughts with us!

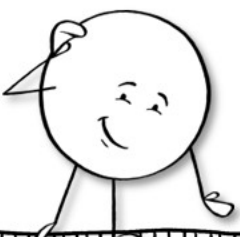


We need YOUR opinion!

INSERT YOUR TINY URL OR
BIT.LY HERE

Type the above URL into your web
browser (phone, tablet, laptop, or
desktop) to complete a brief survey
about _____ Elementary's
school counseling program.

We're all ears, please share your
thoughts with us!



We need YOUR opinion!

INSERT YOUR TINY URL OR
BIT.LY HERE

Type the above URL into your web
browser (phone, tablet, laptop, or
desktop) to complete a brief survey
about _____ Elementary's
school counseling program.

We're all ears, please share your
thoughts with us!



the RESPONSIVE counselor



Hey y'all! I'm Sara. I create resources for elementary students, counselors, and teachers that improve social emotional learning and classroom culture. My focus is making things that are *effective* and *engaging* for WIGGLY + CHATTY learners and that utilize wording and scenarios accessible to underserved and ELL populations.

Education

B.A. from Michigan State University
Psychology and Anthropology

M.S. from Vanderbilt University
Community, Research, and Action

M.Ed. From Vanderbilt University
Human Development Counseling:
School Counseling and
Clinical Mental Health

Experience

I started my post-grad career as a school-based therapist before becoming an elementary school counselor. Social and emotional learning in youth is my passion, whether through large group prevention, individual intervention, or parent and teacher education! I have been an elementary school counselor since 2012, providing a comprehensive school counseling program to a diverse population.

Let's
Connect:

TpT

